



Pennsylvania
Dietetic Association

WWW.EATRIGHTPA.ORG



SEARCH PADA
 Search

- Home For Our Members Find a Nutrition Professional For the Public PADA PADAF PADAPAC



- Delegates
Districts
Jobs
Marketplace
Meetings/Calendar of Events
Newsletter
Public Policy & Advocacy
Resource Center
Scholarships & Awards
Students

Welcome to the Pennsylvania Dietetic Association

The Pennsylvania Dietetic Association, a chapter of the American Dietetic Association, is the advocate of the dietetics profession serving the public through the promotion of optimal nutrition, health and well being. We are an organization of nearly 3400 members throughout the Commonwealth of Pennsylvania.

FEATURED INFORMATION
Online Ballot
73rd Annual PADA Meeting
PANA- Keystone Healthy Zone Schools enrollment information

CLICK HERE
Child Nutrition Consultants in PA

QUICK LINKS
Continuing Education Approval
PADA Grants
PADAF-Make Time for Health Grant
ADAF GALA 2005 Recap in Pictures
FNCE 2005, St Louis Recap in Pictures
Hurricane Katrina Efforts and Thank You's

CLICK HERE
PADA Growth Screening Program Info

Eileen Monahan Chopnick
MBA, RD, LDN
Philadelphia Dietetic Association President
I would like to contribute to the profession that has provided me with so many opportunities. It is an honor to serve in the footsteps of many of my mentors.
Meet the rest of the PADA Board!

CLICK HERE
Visit our Marketplace ... Cookbooks, Superbills, & More!



Search

[Home](#)

[For Our Members](#)

[Find a Nutrition Professional](#)

[For the Public](#)

[PADA](#)

[PADAF](#)

[PADAPAC](#)



[Delegates](#)

[Districts](#)

[Jobs](#)

[Marketplace](#)

[Meetings/Calendar of Events](#)

[Newsletter](#)

[Public Policy & Advocacy](#)

[Resource Center](#)

[Scholarships & Awards](#)

[Students](#)



Janet Little
MPH, RD, LDN
President Elect

[Home](#) » [Career Information](#)

Career Information

Welcome to the Pennsylvania Career Information Page

Would you like to learn more from actual nutrition professionals?
Click below to learn more.

- [What do dietitians and dietetic technicians do?](#)
- [Nutrition Professionals- "In the News"](#)

Interested in learning how to become a dietetic professional?

- [How to become a Registered Dietitian](#)
- [How to become a Dietetic Technician, Registered](#)

PA Dietetics Professionals and students talk about:

- ["How Science Can Help You"](#)

Answers to additional questions:

- [Where are the schools in Pennsylvania that have programs in dietetics?](#)
- [Where can I go to learn more about careers in dietetics?](#)
- [What scholarships are available to dietetic students?](#)
- [Where can I go to find out more information about what I should eat?](#)



Search

[Home](#)

[For Our Members](#)

[Find a Nutrition Professional](#)

[For the Public](#)

[PADA](#)

[PADAF](#)

[PADAPAC](#)



[Delegates](#)

[Districts](#)

[Jobs](#)

[Marketplace](#)

[Meetings/Calendar of Events](#)

[Newsletter](#)

[Public Policy & Advocacy](#)

[Resource Center](#)

[Scholarships & Awards](#)

[Students](#)

[Home](#) » [Students](#) » [What do RDs Do?](#)

What do Dietitians and Dietetic Technicians do?

Learn about exciting careers from actual Pennsylvania Registered Dietitians and Dietetic Technicians. Click on the names of the dietetic professionals listed below to read their stories. You can even chat with them by clicking on their email address!

[Suzanne Bertocchi](#), DTR - At-Large Delegate for Dietetic Technicians

[Chad Edwards](#), MS, RD- Clinical Dietitian, Temple University Hospital

[Paula M. Fairchild](#), DTR - St. Luke's Hospital

[Cheryl Gamber](#), RD - Supermarket Dietitian

[Margaret Gordon](#), MS, RD, LDN- Director, Clinical Dietetics

[Rachael Harken](#), MS, RD, LDN- Part-Time Instructor

[Ryan Hartz](#), MS, RD- Part-Time Business Owner and Clinical Dietitian

[Joseph Herman](#), MS, RD - Senior Director of Clinical Nutrition Services, Cura Hospitality

[Janet K. Little](#), MPH, RD, LDN -Nutrition Consultant, Allentown, PA

[Shawn Tobin](#), MBA, MA, RD, LDN- Clinical Nutritionist, Children's Hospital of Philadelphia

[Crystal Palco](#), Dietitian, Registration Eligible at UPMC Shadyside

[Sharon A Piano](#), MS, RD, LDN, CFCS - Nutrition Program Coordinator, ADADC Mid East



Janet Little
MPH, RD, LDN
President Elect

I enjoy working with members of the dietetic association so our members will be known as nutrition experts by the public after developing and marketing our web site, mentoring programs, partnerships with professionals of other organizations, and participation in the legislative issues concerning our profession and public.

**Meet the rest of the
PADA Board!**

Clinical Dietitian, Temple University Hospital
Philadelphia, PA

Chad Edwards, MS, RD, LDN

Clinical Dietitian, Temple University Hospital
Philadelphia, PA

I received my Bachelor's degree in psychology/biology from Wilkes University. I soon thereafter obtained my Master's degree in Foods and Nutrition from Marywood University. My thesis was on alternative treatments in Alzheimer's disease and I was able to present it at the ADA National Convention in St. Louis in 2001.

My first position after graduating was at Gracedale, a long-term care facility located in the Lehigh Valley. This was an 800-bed facility and while there I was in charge of the nutritional well being of roughly 350 residents. It was a very busy and interesting experience. I also had the opportunity to manage the food service department at times, which was challenging also. In my free time, I was able to speak for the local T.O.P.S. (Taking Off Pounds Sensibly) group and offer insight in to healthful eating and weight maintenance. After leaving Gracedale and the Lehigh Valley, I accepted my current position with Temple University Hospital in Philadelphia, PA. Temple University Hospital is a 617-bed tertiary medical center, certified Level 1 Trauma Center.

My responsibilities as a clinical dietitian at Temple University Hospital include clinical monitoring, the development/adjustment of diets, writing/recommending both enteral and parenteral nutrition support orders and nutritional education of acutely ill people. I deal with people who have a wide variety of diagnoses. Conditions include heart transplant/cardiac surgery/congestive heart failure, diabetes, renal disease, liver disease and general medical/surgical patients. I also am responsible for one of the floors in our children's hospital and complete adult/pediatric outpatient counseling through several of our different clinics. In total, I cover 3 floors totaling approximately 70 beds.

I was responsible for the development of the new weight management program at Temple University Hospital. It is an outpatient-based program to help with weight loss and weight maintenance.

If you have any questions, please let me know!

Chad Edwards



SEARCH PADA [input field] [Search button]

- Home For Our Members Find a Nutrition Professional For the Public PADA PADAF PADAPAC

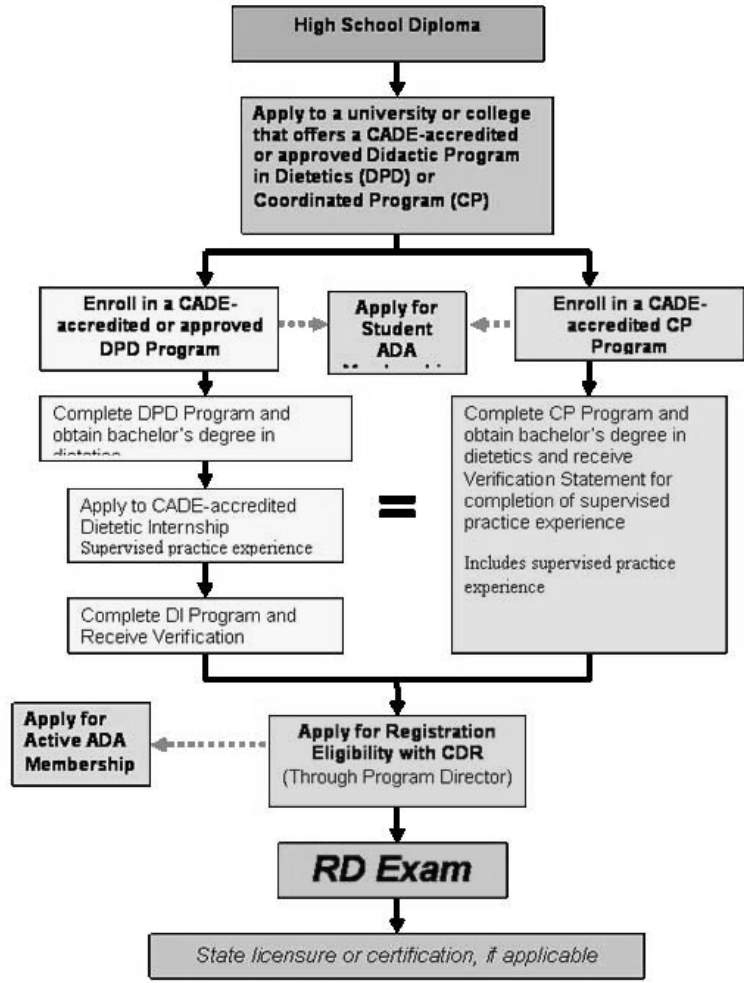
Home>> Students>> How to become a Registered Dietitian

How to become a Registered Dietitian

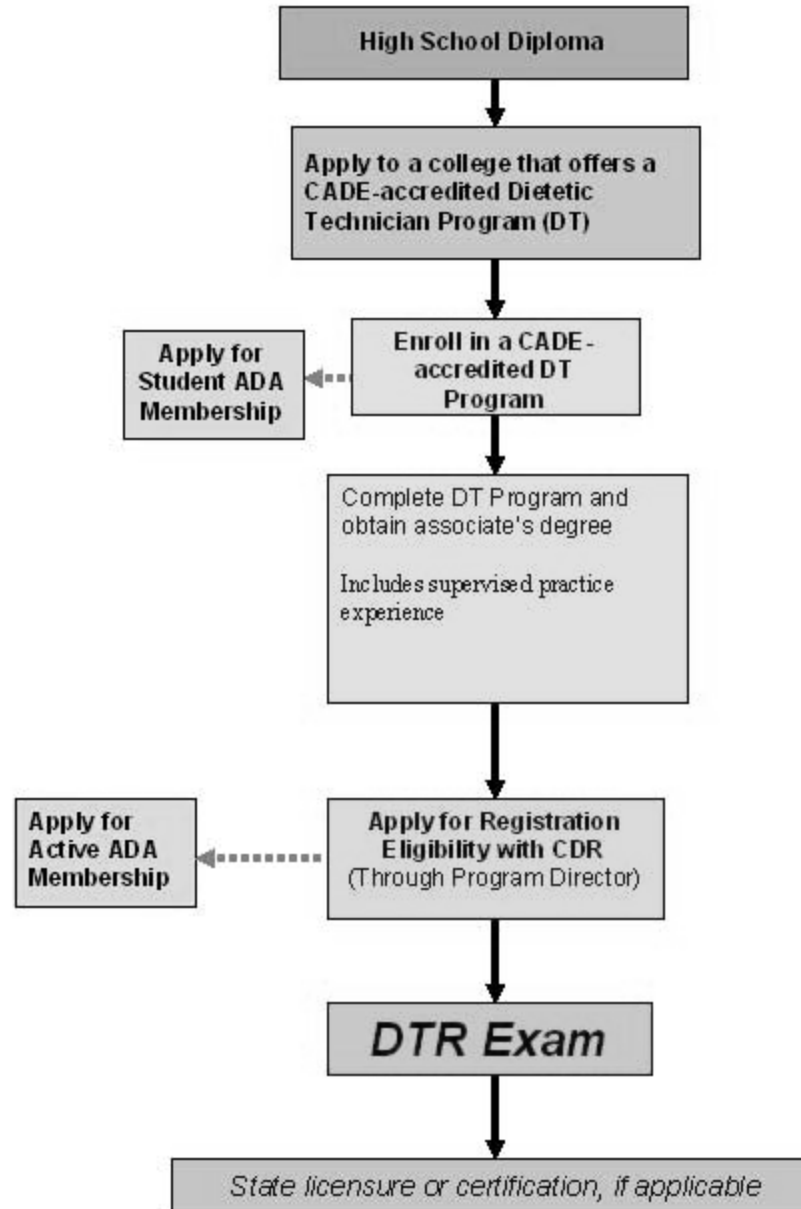


- Delegates Districts Jobs Marketplace Meetings/Calendar of Events Newsletter Public Policy & Advocacy Resource Center Scholarships & Awards Students

High School – Pathway to RD



High School – Pathway to DTR





Search

[Home](#)

[For Our Members](#)

[Find a Nutrition Professional](#)

[For the Public](#)

[PADA](#)

[PADAF](#)

[PADAPAC](#)



[Home](#) » [Resource Center](#)

Resource Center

[Websites](#)

[Children](#)

[Growth Screening](#)

[Top Teen Nutrition Websites](#)

[Top Teen Job Site](#)

[Websites with "Free Stuff"](#)

[Delegates](#)

[Districts](#)

[Jobs](#)

[Marketplace](#)

[Meetings/Calendar of Events](#)

[Newsletter](#)

[Public Policy & Advocacy](#)

[Resource Center](#)

[Scholarships & Awards](#)

[Students](#)



SEARCH PADA
Search

- Home
For Our Members
Find a Nutrition Professional
For the Public
PADA
PADAF
PADAPAC



- Delegates
Districts
Jobs
Marketplace
Meetings/Calendar of Events
Newsletter
Public Policy & Advocacy
Resource Center
Scholarships & Awards
Students

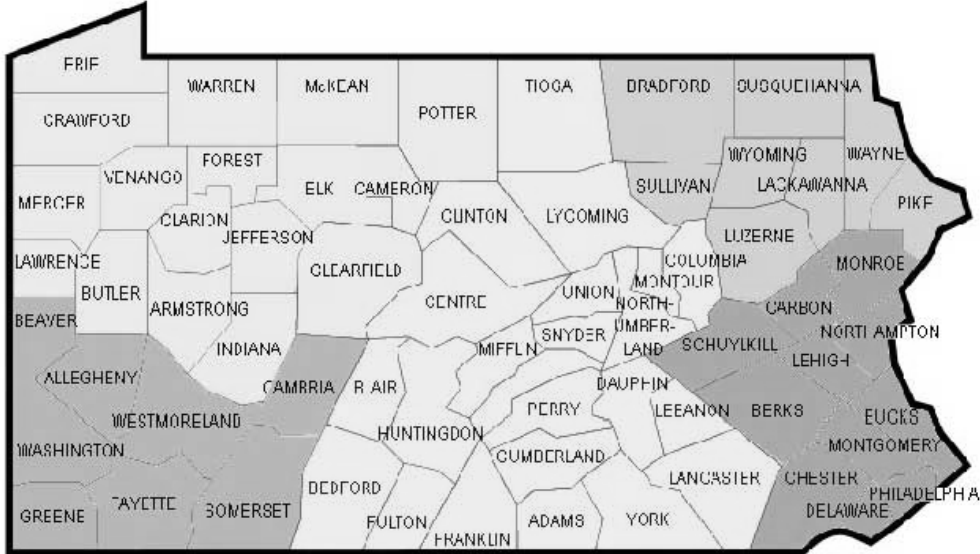


Ruth Anne McGinley
MS, RD, LDN
PADAF President

I've always felt that it was important to give back to the profession. It is valuable because you get to meet and network with a very talented group of professionals. It allows you to keep up to date

Home » Districts

Districts



Click on the map above to be taken to your district's website.

- Yellow - Central Pennsylvania Dietetic Association
Purple - Lehigh Valley Dietetic Association
Blue - Northeast Pennsylvania Dietetic Association
Green- Northwest Pennsylvania Dietetic Association
Orange - Philadelphia Dietetic Association
Salmon - Pittsburgh Dietetic Association